

Prestige portholes

Our Prestige portholes have the same allure as our ship's windows and escape hatches. They complement each other and give an attractive finish to all openings in the ship's hull. The portholes are manufactured from polished and anodised seawater resistant aluminium. A grey tinted acrylic is used as glazing, thickness 8 mm. All our Prestige portholes are CE certified and comply with the NEN-EN-ISO 12216 standard. The Prestige portholes can be used in design category A-Ocean. In general portholes opening inwards are used in order to allow the rooms to be ventilated. However, a non-opening variety is also available and naturally this has the same design. We manufacture the Prestige portholes in two models: one rectangular with four rounded corners and the other bullet shaped with two rounded ends.

Hinges

Special friction hinges ensure that the opening part can be left open at any position.

Fixing

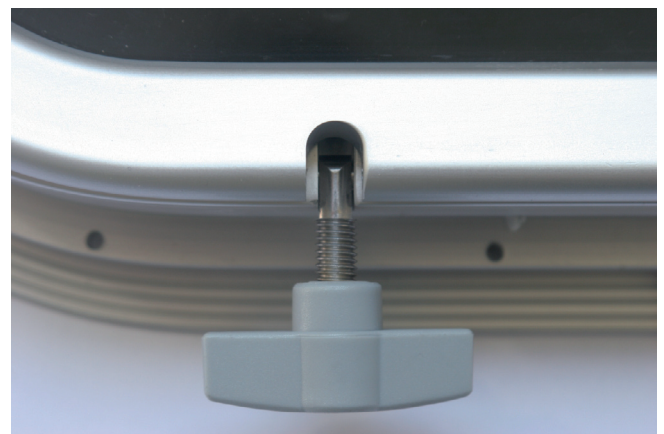
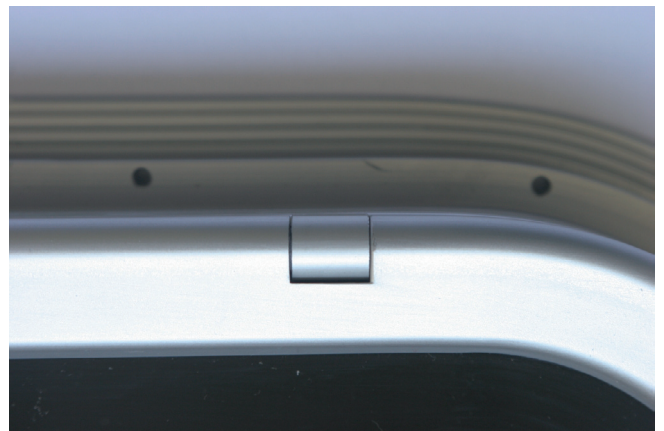
The portholes are fixed invisibly from the inside using an aluminium frame fitted to the ship's wall. Fitting is done by tightening up bolts in pre-drilled and threaded holes. No preparation to the ship's hull is necessary.

Shape

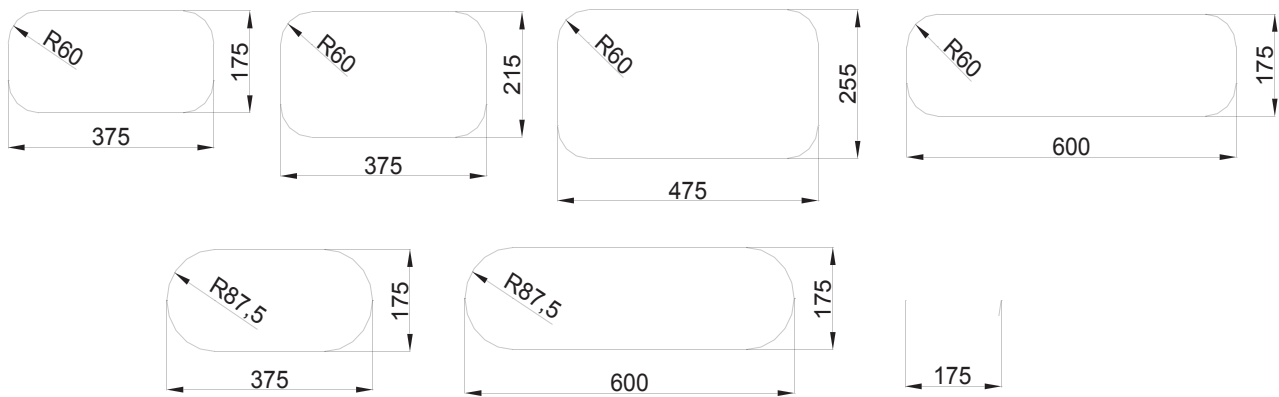
The outside of the porthole is designed such that all water will run off the outside. No water will come in when the porthole is opened after rainfall.

Options

- Acrylic in green, bronze or clear colour.
- Aluminium powder coated in a RAL colour of choice.
- Detachable flyscreen.
- Rain cover, to allow for ventilation during rainfall. Available separately, but to be used in combination with a flyscreen.



Prestige portholes



Hole-in-plate dimensions for portholes

Description: A porthole with an aluminium opening part fitted with an acrylic window pane.

Fixing: With a clamping frame on the inside or with screws on the outside.

Materials: The outer frame, the inner frame and the opening part are manufactured from seawater resistant aluminium. All fixing materials used are made from stainless steel. The window is made from 8 mm thick grey acrylic.

Surface treatment: polished and anodised or powder coated in a RAL colour.

Special requirements: The portholes must be fitted in a flat wall. A difference of 1 mm is acceptable. Fixing materials and packing are not included as standard. Inseal tape 12 x 3 mm (art. no. RU84) for use as sealant can be ordered from us. Use M4 screws of the correct length as shown in the table below for fixing the aluminium inner frame.

Wall thickness Screw length

4-5 mm	12 mm
6-10 mm	16 mm
11-15 mm	20 mm
16-19 mm	25 mm
20-22 mm	30 mm

Maintenance: Just like everything else on board your ship the portholes also require some maintenance. Both anodised and colour coated frames must be cleaned several times a year. How often this is necessary depends very much on where the ship is berthed. Maintenance of the portholes can best be compared with that of a car - the more often it is washed and waxed the longer it lasts and the better it looks. It is best to wash the portholes thoroughly with water first to remove any sand so that this will not cause any scratches during further intensive cleaning. Anodised aluminium can be cleaned using lukewarm water. If a detergent is used make sure that this is neutral, synthetic and non-abrasive.

Never use:

- solvents such as petroleum spirit, acetone etc.
- alkaline or acidic detergents.
- abrasive materials.